

NOTES:

1. ATTACH GROUND STRAP WITH SCREW PC 324.
2. NO PAINT ALLOWED ON THREADS ON FLANGE.
3. LOCATION OF IMPELLER TO BE .164/.084 FROM EDGE OF IMPELLER TO INSIDE OF HOUSING SHELL.
4. "SWITCH MUST MAKE CONTACT BETWEEN 1800-2500 RPM AS SPEED INCREASES AND 'BREAK' 50-500 RPM BELOW ACTUAL 'MAKE'".
5. SWITCH MECHANISM TO GIVE QUIET OPERATION ABOVE 2500 R.P.M.
6. THREADS MUST BE FREE OF PAINT BEGINNING A MAXIMUM OF 1/8" (4 THD'S) FROM FACE OF FLANGE.
7. PACK 1 PER CONTAINER, 80 MAX. PER PALLET, PACKING ASSY. 8785 4000, 16 CARTONS PER LAYER, 5 LAYERS PER PALLET, P.S. 8883 4200 AND P.S. 8883 4408.
8. CARTON LABELS MUST ALL FACE ONE DIRECTION TOWARD THE OPEN END OF THE PALLET. SEE P.S. 8883 4408.3
9. NO PACKING TAPE OVER CARTON LABEL.

Connection Diagram
 Blk — Line
 Blk — Line
 Red — Line
 Red — Line
 Grn/Yel — Grd

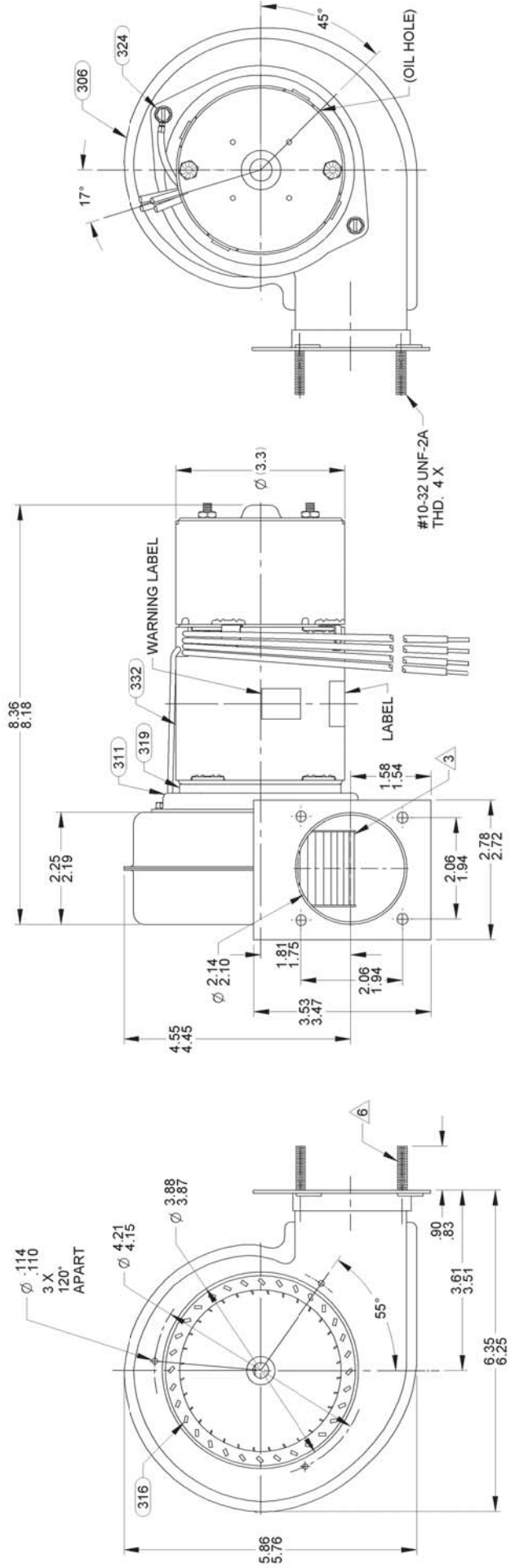
APPLICATION
 THERMALLY PROTECTED
 CLASS "B" INSULATION
 SEALED BALL BEARING
 416 S.S. SHAFT

CUSTOMER FASCO DIST.
 CUSTOMER PART NO. AO75

LEAD MATERIAL
 18 GA. 125°C. 4/64 INS.
 EPDM (2) BLACK
 62.00/60.00 IN. LONG
 .56/.44 IN. STRIP

SWITCH LEAD MATERIAL
 18 GA. 125°C. 4/64 INS.
 EPDM, (2) RED
 62.00/60.00 IN. LONG
 .56/.44 IN. STRIP

GROUND LEAD
 18 GA. 125°C 2/64 INS.
 X-LINK POLY., GRN/YEL
 6.00/4.00 IN. LONG
 8902-0157 RING TERM.
 AMP #350436-2



TYPICAL PERFORMANCE TEST DATA IN FREE AIR

AT	230	VOLTS	60	HZ.	AMPS
R.P.M.	3223	WATTS	61		.39
END PLAY					XX/XX
BLOWER WEIGHT	5 1/4				
	LEBS.				

UNLESS OTHERWISE SPECIFIED DIMENSIONS ARE IN INCHES TOLERANCES ARE FRACTIONS DECIMALS ANGLES ± 1/16 .0010 .0010 ± 1°

APPROVALS: JMH DATE: 07/07/2005
 DRAWN: JMH CHECKED: SDM DATE: 07/07/2005

FINISH COLOR: BLACK

FASCO MOTORS GROUP
 AC MOTOR/BLOWER DIVISION

CONFIDENTIAL. DO NOT DUPLICATE OR RELEASE TO THIRD PARTIES WITHOUT WRITTEN PERMISSION OF FASCO MOTORS GROUP, AC MOTOR/BLOWER DIVISION.

TITLE: BLOWER ASSEMBLY

SIZE: B DWG. NO.: 7021 6522 REV: 31

DO NOT SCALE DRAWING SHEET 1 OF 1