

NOTES:

1. ATTACH GROUND STRAP WITH PC 324 SCREW.
2. LOCATION OF IMPELLER TO BE .164/.084 FROM EDGE OF IMPELLER TO INSIDE OF HOUSING SHELL.
3. PACK 1 PER CONTAINER, 100 MAX. PER PALLET, PACKING ASSY.: 8785-4872, 20 CONTAINERS PER LAYER, 5 LAYERS PER PALLET, P.S. 8883-4200 AND P.S. 8883-4408.
4. THREADS MUST BE FREE OF PAINT BEGINNING A MAXIMUM OF 1/8" (4 THDS) FROM FACE OF FLANGE.
5. CARTON LABELS MUST ALL FACE ONE DIRECTION TOWARD THE OPEN END OF THE PALLET. SEE P.S. 8883-4408.
6. NO PACKAGING TAPE OVER CARTON LABEL.

APPLICATION

THERMALLY PROTECTED CLASS "B" INSULATION
416 S.S. SHAFT

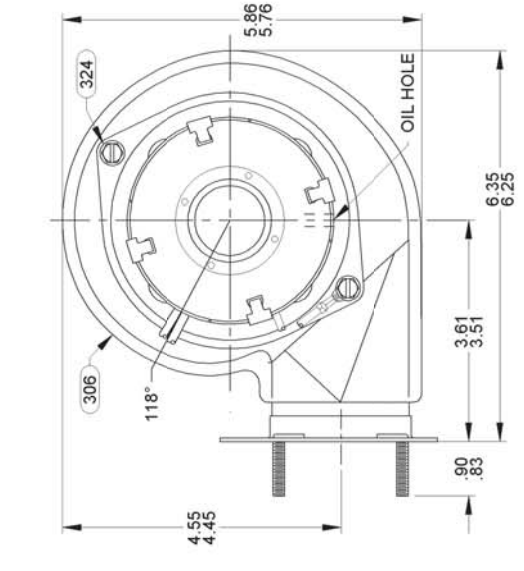
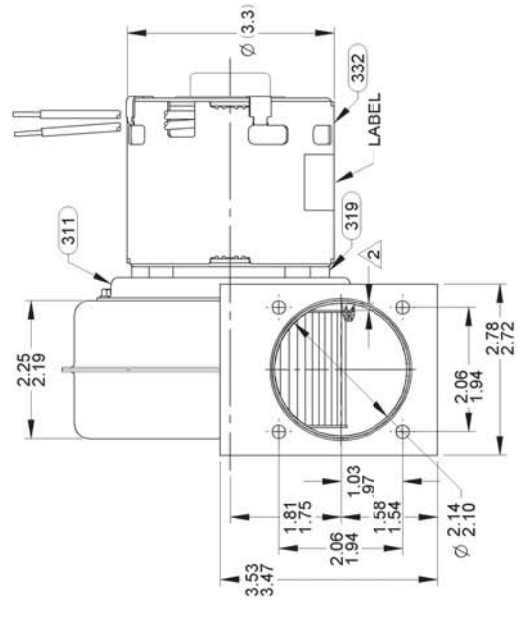
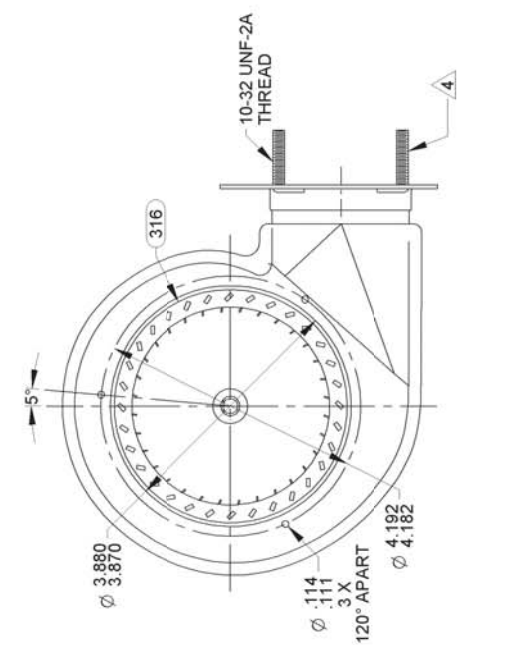
CUSTOMER FASCO DIST.
CUSTOMER PART NO. A069

GROUND LEAD MATERIAL
18 GA. 105°C 2/64 INSUL.
THERMO. GREEN
5.25/4.25 IN. LONG
RING TERM. 8902-0157
AMP #350436-2

LEAD MATERIAL
18 GA. 125°C 4/64 INSUL.
EPDM. (2) BLACK
83.00/81.00 IN. LONG
.56/44 IN. STRIP

If Printed, this is an Uncontrolled Document

B	LA	FR	A	S	C	E	B	A
06	21	30	V	02	HM	5	4	0



TYPICAL PERFORMANCE TEST DATA IN FREE AIR

AT	230	VOLTS	60	HZ.
		R.P.M.	WATTS	AMPS
		3011	60	.42
		BLOWER WEIGHT LBS.		END PLAY
		3.75		.050/.010

UNLESS OTHERWISE SPECIFIED DIMENSIONS ARE IN INCHES TOLERANCES ARE FRACTIONS DECIMALS ANGLES	
± 1/16	± .005
XX	.XXX ± .005
XXX	± .005
APPROVALS	
APPROVED	DATE
PLA	09/12/2005
DRAWN	
APPROVED	DATE
JMH	09/12/2005
CHECKED	
FINISH COLOR	
BLACK	

FASCO MOTORS GROUP AC MOTORBLOWER DIVISION	
CONFIDENTIAL - DO NOT DUPLICATE OR DISCLOSE TO THIRD PARTIES WITHOUT WRITTEN PERMISSION OF FASCO MOTORS GROUP AC MOTORBLOWER DIVISION.	
TITLE	
BLOWER ASSEMBLY	
SIZE	DWG. NO.
B	7021 8548
REV	15
DO NOT SCALE DRAWING	
SHEET 1 OF 1	