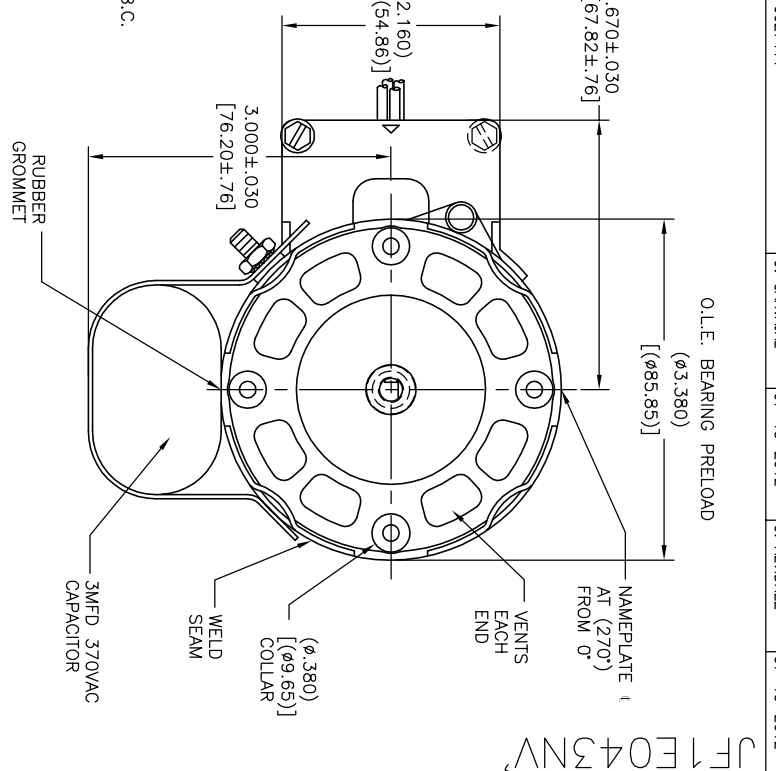
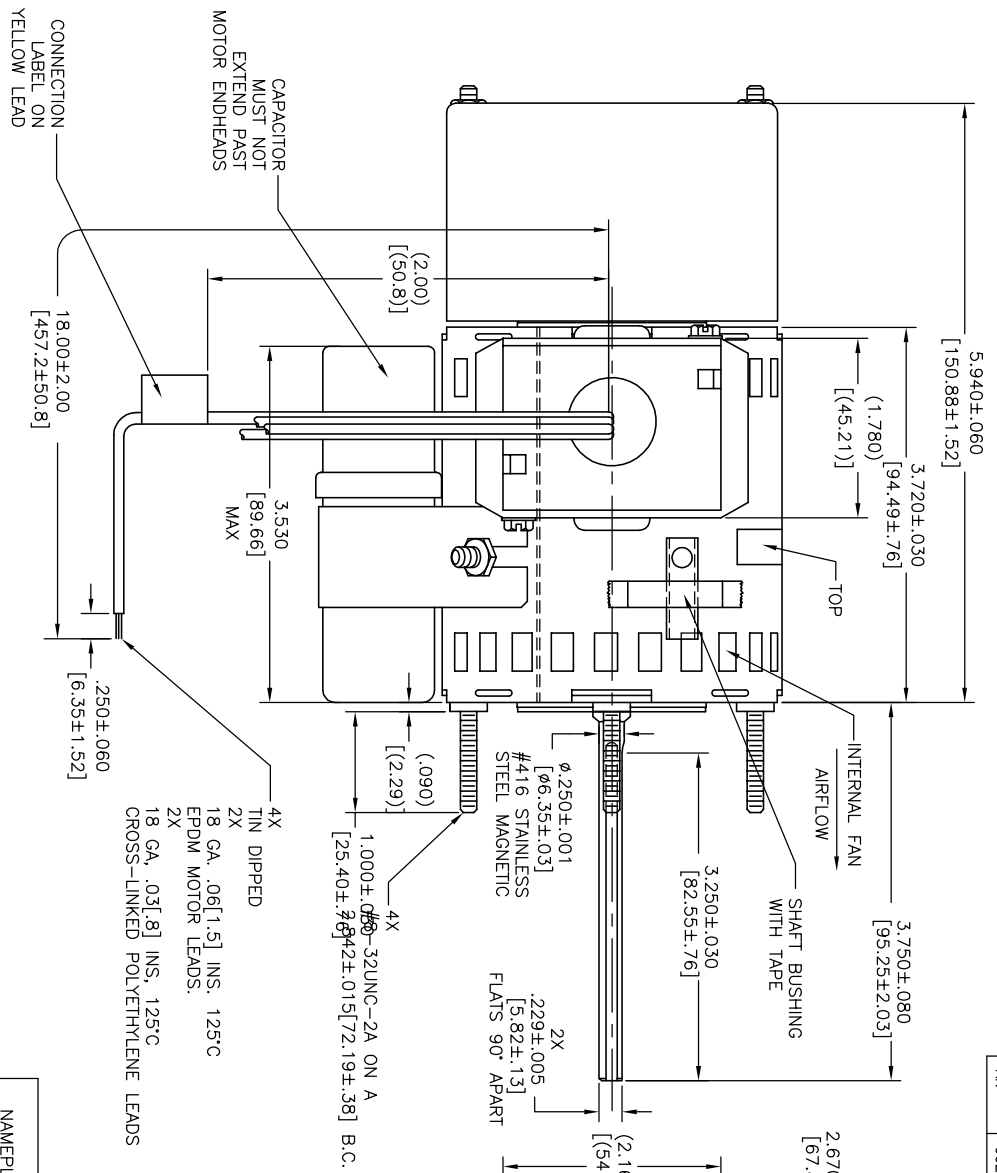


REV	ECO	REV BY	DATE	APPD	DATE
AN	0027411	O. CARVAL	07-13-2012	G. ALVAREZ	07-13-2012

JF1E043NV

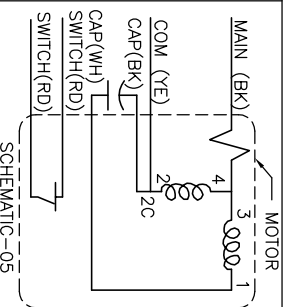


CONN. LABEL	CONVILE-CW/SE
6ST473-94	

AFTERMARKET	STOCK NUMBER
	778

ELECTRICALLY PER SAMPLE S-9479D

Century THERMALLY PROTECTED
Tipp City, OH
 MOD JF1E043NV
 SER-DATE PLT
 208-230V 60HZ .41A 3450RPM 1/16HP CONT. AO
 BALL BEARINGS CLASS B INS MAX AMB 40°C 1PH
 CENT SWITCH MAX. 2A AT 120V ← ROTATION →
 STOCK NO. 778 ASSEMBLED IN MEXICO



GEOMETRIC CHARACTERISTICS & SYMBOLS	UNLESS OTHERWISE SPECIFIED	THIRD ANGLE PROJECTION	DESCRIPTION	SCALE	SHEET
a FLATNESS	DIM. TOLERANCES ARE AS FOLLOWS:	FORMAT REV H	MODEL-SFHP-3.3	C	1
b STRAIGHTNESS	INCH ±.0005	EDS DATE 11-11-2011	REGAL-BELOIT CORPORATION	NONE	
c SURFACE FINISH	INCH ±.0005				
d PERPENDICULARITY (SQUARENESS)	INCH ±.0013 ±.0013				
e PARALLELISM	ANG. ±50 DEG				
f ROUNDNESS (CIRCULARITY)	REMOVE BURRS & BREAK SHARP EDGES:				
g CYLINDRICITY	INCH .003-.015 mm 0.1-0.4				
h PROFILE OF ANY SURFACE	CORNER FILLETS TO:				
i RUNOUT	INCH .020 mm 0.5				
j TRUE POSITION	MACHINE SURFACES:				
k CONCENTRICITY	INCH 125 mm 3.2				
l SYMMETRY	METRIC DIMS. SHOWN IN [BRACKETS]				