

NAMEPLATE DATA:



THERMALLY PROTECTED
 MOD 12 JA2M213NS+ STOCK #458
 SERDATE, PLT 115V 50/60HZ 1.4/1.2A 1355/1595RPM 1/45HP
 CLASS B INS. MAX AMB 40°C 1PH CONT A.O.
 ASSEMBLED IN MEXICO
 (4.75)

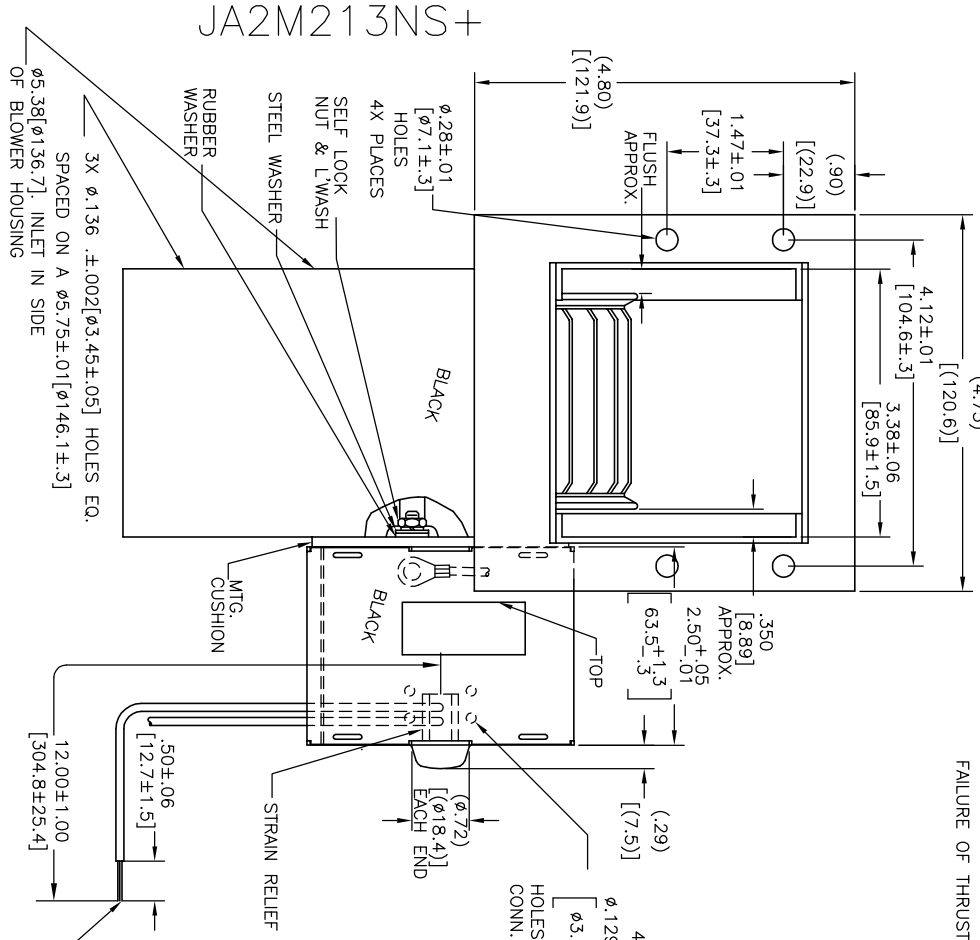
Tipp City, OH



NOTE:
 1. IF USED WITH SOLID STATE SPEED CONTROL CONTROL COULD CAUSE NOISE.
 2. PROLONGED OPERATION IN SHAFT VERTICAL POSITION COULD RESULT IN FAILURE OF THRUST WASHER.

END PLAY .04[1.0] MAX.

1X AMP TERM #350436-2 FOR
 #10 SCREW ON 18 GA. .03[.8] INS
 105°C PVC GN/YE GROUND



JA2M213NS+

JA2M213NS+

GEOMETRIC CHARACTERISTICS & SYMBOLS
 FLATNESS
 STRAIGHTNESS
 PERPENDICULARITY (SQUARENESS)
 PARALLELISM
 ROUNDNESS (CIRCULARITY)
 CYLINDRICITY
 PROFILE OF ANY SURFACE
 RUNOUT
 TRUE POSITION
 CONCENTRICITY

UNLESS OTHERWISE SPECIFIED DIM. TOLERANCES ARE AS FOLLOWS:
 INCH ±.0005
 MM ±.013
 ANG. ±50 DEG.
 REMOVE BURRS & BREAK SHARP EDGES.
 CORNER FILLETS TO:
 INCH .020
 MM 0.5
 MACHINE SURFACES:
 INCH 125
 MM 3.2

DR. BY: JIMERM
 APPD: SWEBER
 07-01-2005
 11-11-2011
 EDS DATE
 FORMAT REV H

REGAL
 REGAL-BELOIT CORPORATION
 MODEL-SFHP-3.3
 OUTLINE
 JA2M213
 SHEET 1