

# Product Line

## C Frame

Pages 9-11



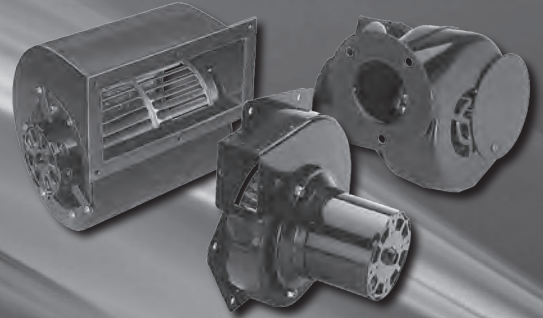
## 2-75W Unit Bearing Motors

Pages 12-18



## Centrifugal Blowers

Pages 19-27



## 3<sup>3</sup>/<sub>8</sub>" Motors

Pages 28-36



## 4<sup>5</sup>/<sub>16</sub>" Motors

Pages 38-39



## 5" Motors

Pages 40-56



## 5<sup>5</sup>/<sub>8</sub>" Motors

Pages 57-83



## 6<sup>1</sup>/<sub>2</sub>" Motors

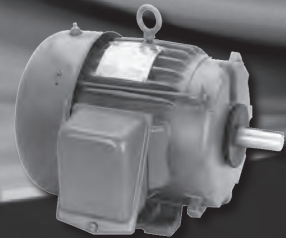
Pages 84-85



## NEMA 48-449T Frame —

## Single and Three-phase ODP and Totally Enclosed Motors

Pages 133-192



## Pool & Spa Motors

Page 193-215



## Commercial Pump Motors

Page 216-222



## Parts and Accessories

Pages 231-243



## Capacitors

Page 234



U|P|P|C|O | Universal Electric®

# Century®